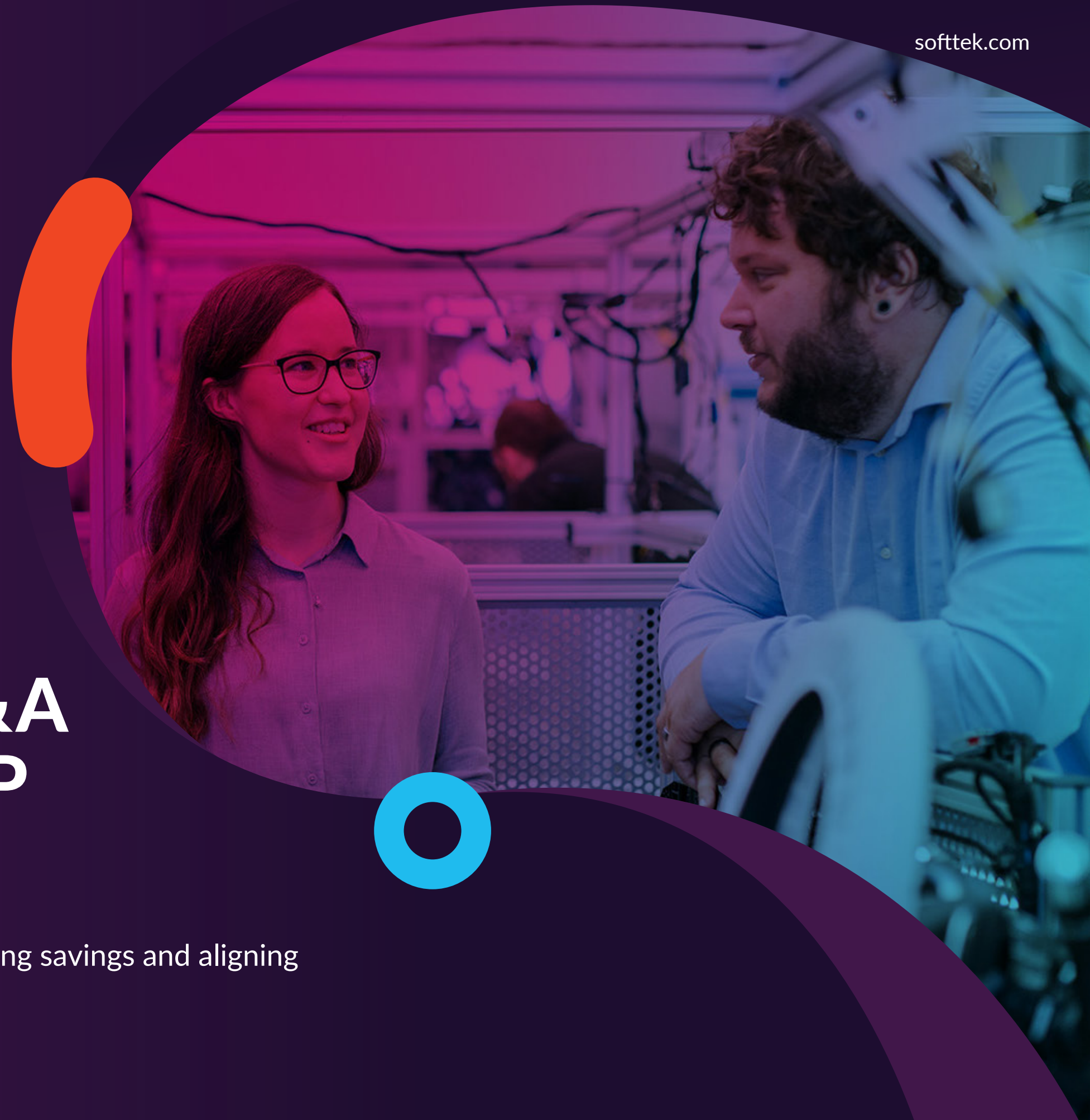




CASE STUDY / INDUSTRIAL

# Leading automotive supplier accelerates M&A efficiencies through SAP integration

SAP implementation enables transparent transition, generating savings and aligning operations to meet business demand.





# About the customer

Global automotive supplier.



**60+**  
plants.



Presence in  
**12 countries.**



**30,000+**  
employees.



**3k+**  
fixed assets.



**Softtek**

INDUSTRIAL | Leading automotive supplier accelerates M&A efficiencies.





# Business challenges

The client required swift integration of a recently acquired plant in order to appropriately support business operations and reduce high costs caused by an outdated technology ecosystem.

1

Lack of visibility of new acquisition's operations.

2

High degree of customization employed to overcome operational gaps.

3

Must expedite merge & acquisition to materialize business goals.

4

Need to deploy standardized processes to enable visibility of global operations.

5

Imperative to achieve substantial cost reductions through process standardization.

# How Softtek comes into play

Softtek provided SAP rollout integration across business areas, complying with local regulations and enabling a transparent transition towards new operating processes.

**SAP rollout integration for:** financial and controlling processes, asset and materials management, quality and manufacturing processes

**Full compliance with local regulations** and specific requirements, including tax requirements, import and export, government financial reports, etc.

**Day-to-day visibility** of business performance, facilitating a proactive management approach.

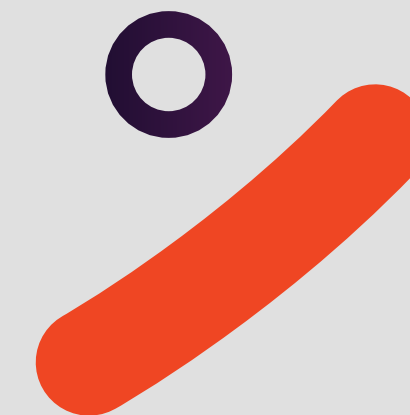


**Softtek**

INDUSTRIAL | Leading automotive supplier accelerates M&A efficiencies.



# Business impact



Softtek helped the client rapidly integrate a new plant's operations into their own, achieving more efficient operations that meet increased production volumes easily, optimized costs, and improved system and infrastructure reliability.



Smooth and timely integration of acquired plant to global operations.



Additional savings generated by optimizing process integration.



Improved plants' capacity to respond to larger demand volume.



Real-time visibility of financial and operations information.



Implemented reliable and efficient technology ecosystem to support business operation.





## ABOUT SOFTEK

Founded in 1982, Softtek is a global company and the largest provider of IT services from Latin America. With a broad portfolio of business-transforming products and solutions, Softtek helps Global 2000 organizations evolve their digital capabilities constantly and seamlessly, from ideation and development to execution.

[info@softtek.com](mailto:info@softtek.com)  
[softtek.com](https://softtek.com)